



FOCUS ON SONY XDCAM EX

Whether you're producing video for television, education, business, research, or health care, you need instant, reliable, and secure access to your media library. Crafted to meet the specific needs of Sony PMW-EX-1 users, the Focus PX-100 Media Server for Sony XDCAM EX enables workgroups to store, query, and view video with ease.

PX-100 Media Server for Sony XDCAM EX

Access your entire video library from your desktop.

With an intuitive browser-based interface, robust features, and scalable configuration options, the Focus PX-100 Media Server for Sony XDCAM EX makes media asset management simple, cost-effective, and secure. With the PX-100 Media Server, you can integrate your entire workflow, including acquisition, storage, and distribution, to gain unparalleled efficiencies. Designed for fast performance, the PX-100 Media Server uses rich metadata to make it easy to find and retrieve footage. And the browser-based interface provides instant access to your files from any location.

Features	Benefits
Native Sony XDCAM EX file support	The PX-100 Media Server preserves the native Sony XDCAM EX metadata and file structure and allows you to add custom metadata to your footage.
Powerful search capabilities	With the PX-100 Media Server for Sony XDCAM EX and its rich metadata capabilities, you'll no longer have to thumb through tapes and DVDs on your shelves, go through folders on your hard disks, or fast-forward through hours of footage trying to find the exact clip that you need. Simply enter your search criteria, such as location, date, or shot ranking, and the PX-100 Media Server will display the clips that meet your parameters—instantly.
Bandwidth-efficient preview	The PX-100 Media Server protects your footage and conserves network bandwidth by generating low-resolution proxy video clips for preview.
Secure asset protection	To keep your media assets secure, the PX-100 Media Server enables you to assign access rights to projects by workgroup or individual user, ensuring that you maintain complete control over who can access your footage and files.
High-capacity storage	The PX-100 Media Server includes internal storage for more than 3,000 hours of video (model dependent) and provides quick access to your digital media files over a network. Offline storage is provided by a robotic optical storage solution that stores media on discs. A copy of the data can be accessed or discs can be removed from the system and shelved. Either way, the PX-100 Media Server keeps track of your footage so you can easily locate and retrieve it at any time.

A light green circle containing the word "Efficient".

Efficient

A light green circle containing the text "Cost-Effective".

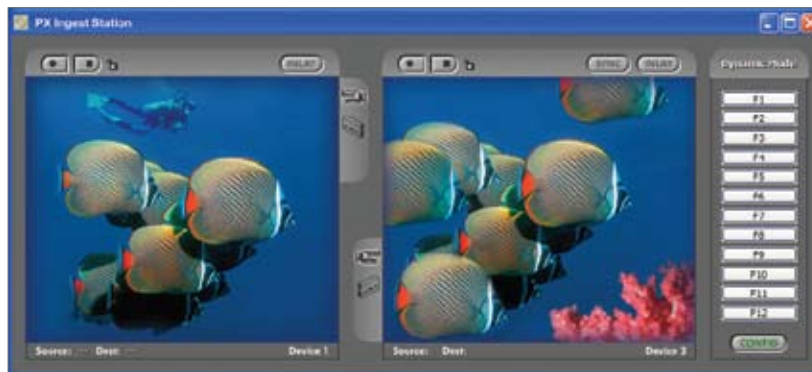
Cost-Effective

A light green circle containing the word "Secure".

Secure

PX HD Scheduled Ingest Station

Capture footage from up to four different sources, monitoring each through its own window.



Attach metadata on the fly using up to 12 user-configurable "hot keys."

PX HD Scheduled Ingest Station

Featuring Sony MPEG-2 HD and MPEG-2 encoding technology, the PX HD Scheduled Ingest Station enhances your workflow by enabling you to ingest, index, and upload multiple channels of HD and SD video to the PX-100 Media Server for Sony XDCAM EX. Through its intuitive interface, the PX HD Scheduled Ingest Station delivers the functionality of high-end ingest products without requiring the user to be a technical expert.

PX-100 Media Server for Sony XDCAM EX

Enjoy an intuitive web browser interface with user-friendly navigation. No proprietary client software required.

Manage multiple projects with unique and secure access rights.



View proxy files in the integrated player, complete with mark-in and mark-out tools for clip extraction.

Search easily using time-code-based metadata.

PX-100 Media Server for Sony XDCAM EX

Designed for fast performance, the PX-100 Media Server for Sony XDCAM EX is perfect for workgroups and uses rich, frame-based metadata to make it easy to find and retrieve media assets quickly.

Support and Components

Support

The PX-100 Media Server for Sony XDCAM EX features flexible storage configurations to suit a range of media management needs. When you purchase the PX-100 Media Server, you not only receive a reliable solution that delivers superior performance every day, you also receive unconditional service and support from a team of seasoned media management professionals. All products are backed by comprehensive warranties and optional support contracts that cover installation, training, 24/7 phone support, and priority parts replacement.

Consultation

With extensive experience in designing, configuring, and integrating media asset management solutions for organizations around the world, the Focus team can help you select the perfect configuration to meet your specific needs.

PX Media Asset Management

PX Media Server

PX-100 for Sony XDCAM EX	IBM System x3650
--------------------------	------------------

Media Asset Management Software

PX Media Server Workgroup Edition 5.0 ¹	Supports up to 24 users
--	-------------------------

Client

Web Browser ¹	Windows: Firefox, Internet Explorer; Mac OS: Firefox, Safari
--------------------------	--

Media Import

PX Media Transfer Utility	Imports individual media files or entire folders containing media files; maintains established hierarchy
---------------------------	--

Storage Options

SAS RAID-5	4–12TB; storage hours at 6 Mbps: 500+
------------	---------------------------------------

Plasmon Ultra Density Optical (UDO)	4.8TB; storage hours at 8 Mbps: 1,300+
-------------------------------------	--

IBM TS3100 Tape Library Express	Storage capacity per tape library: 17.6TB (compressed); 8.8TB (native)
---------------------------------	--

PX Media Export Modules (Optional)

PX Public Export Module	Copies video or image files to a web server via FTP
-------------------------	---

PX FTP Push Export Module	Transfers high-resolution files to an FTP server via FTP
---------------------------	--

PX Order Form Export Module	Includes a customizable form to collect information before enabling a user to download files
-----------------------------	--

PX Rimage DVD Authoring Export Module	Burns selected MPEG-2 video clips to a DVD; includes DVD menus and label templates
---------------------------------------	--

PX Expansion Options

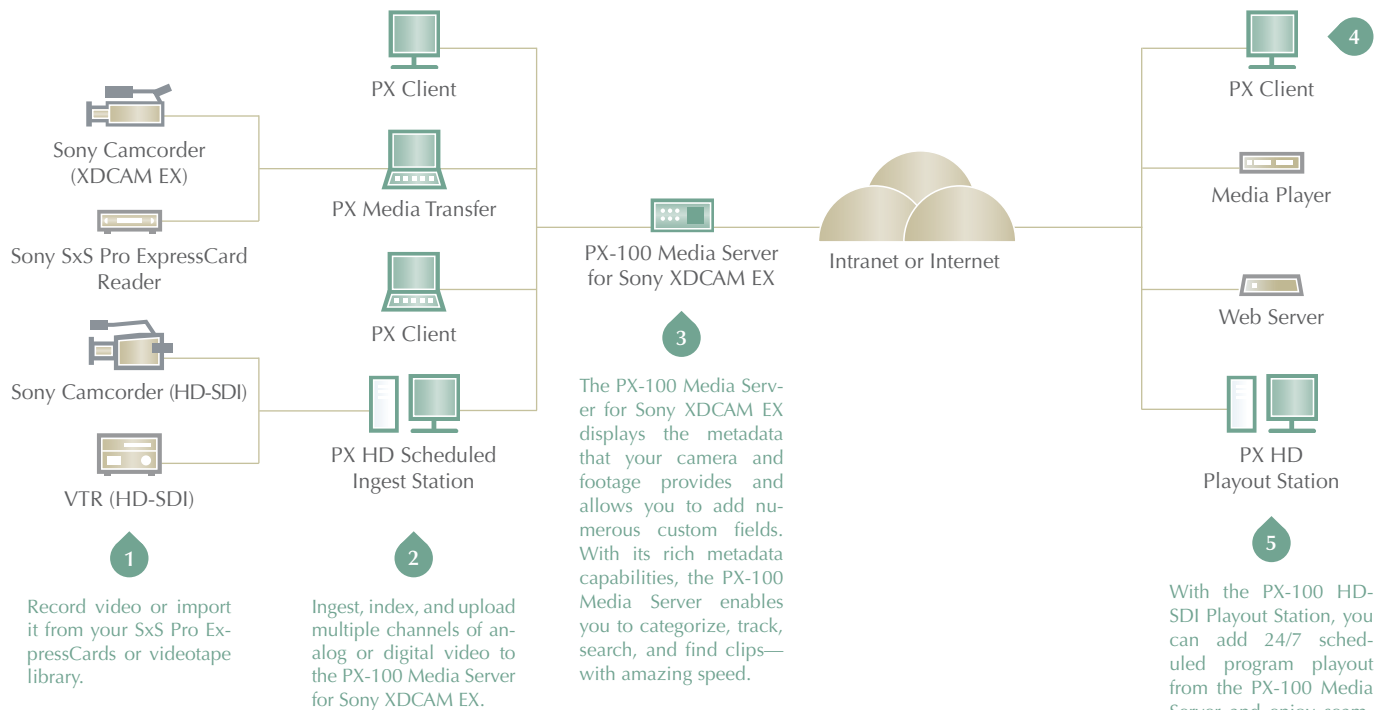
PX SD Scheduled Ingest Station	Ingests, indexes, and uploads multiple channels of analog or digital video to the PX-100 Media Server for Sony XDCAM EX
--------------------------------	---

PX Transcode Station	Encodes, transcodes, and converts video formats and broadcast standards
----------------------	---

PX HD Payout Station	Adds 24/7 scheduled program payout to the PX-100 Media Server for Sony XDCAM EX
----------------------	---

¹ Only a web browser required; no client software needed

Workflow



Record video or import it from your SxS Pro ExpressCards or videotape library.

Ingest, index, and upload multiple channels of analog or digital video to the PX-100 Media Server for Sony XDCAM EX.

The PX-100 Media Server for Sony XDCAM EX displays the metadata that your camera and footage provides and allows you to add numerous custom fields. With its rich metadata capabilities, the PX-100 Media Server enables you to categorize, track, search, and find clips—with amazing speed.

The browser-based interface provides instant access to your entire video library from any location.

With the PX-100 HD-SDI Playout Station, you can add 24/7 scheduled program playback from the PX-100 Media Server and enjoy seamless playback of high-resolution MPEG-2 and DV formats.

Focus PX-100 XDCAM EX Media Server



PX-100 Media Server for Sony XDCAM EX

Engineered specifically for Sony PMW-EX1 users, the PX-100 Media Server for Sony XDCAM EX from Focus Enhancements makes media asset management simple and cost-effective. A fully integrated solution, the PX-100 Media Server combines PX Media Asset Management software with professional-grade server hardware to provide an affordable turnkey media asset management system that can easily grow as your needs evolve.

XDCAM EX

Focus PX Expansion Options

PX HD Scheduled Ingest Station

Providing support for high-resolution MPEG-2 HD and MPEG-2 encoding, the PX HD Scheduled Ingest Station enhances your workflow by enabling you to ingest, index, and upload multiple channels of analog or digital video to the PX-100 Media Server for Sony XDCAM EX.

PX Transcode Station

With the PX Transcode Station, you can encode, transcode, or convert video formats and broadcast standards quickly and easily. Support for numerous video codecs is included.

PX HD Playback Station

With the PX HD Playback Station, you can add 24/7 scheduled program playback from the PX-100 Media Server for Sony XDCAM EX and enjoy seamless playback of high-resolution MPEG-2 HD and MPEG-2 video.



www.focusinfo.com

Corporate Headquarters

Focus Enhancements
1370 Dell Avenue
Campbell, CA 95008

P 800 338 3348 (toll free)
P 408 866 8300
F 408 866 4859
E sales@focusinfo.com
E asiapac@focusinfo.com

European Headquarters

COMO Computer & Motion GmbH
A Focus Enhancements Company
Lise-Meitner-Str.15
24223 Schwentintental
Germany

P +49 4307 8358 0
F +49 4307 8358 99
E emea@focusinfo.com

©2008. Focus Enhancements, Inc. Specifications subject to change. All brand and product names are trademarks of their respective companies. MANL-1134-01
Printed in U.S.A. 4/08